

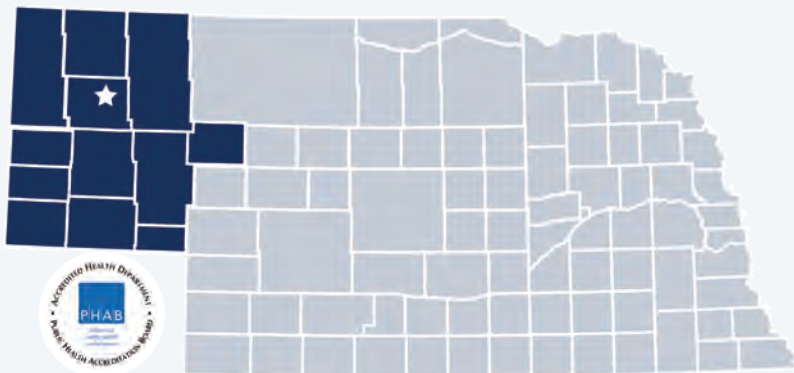
Panhandle Public Health District

2019 Profile



Contact:
 Kim Engel, Director
 kengel@pphd.org
 (308) 487-3600
 www.pphd.org

Panhandle Public Health District is locally governed and serves all **85,942** residents in **Banner, Box Butte, Cheyenne, Dawes, Deuel, Garden, Grant, Kimball, Morrill, Scotts Bluff, Sheridan,** and **Sioux** Counties.

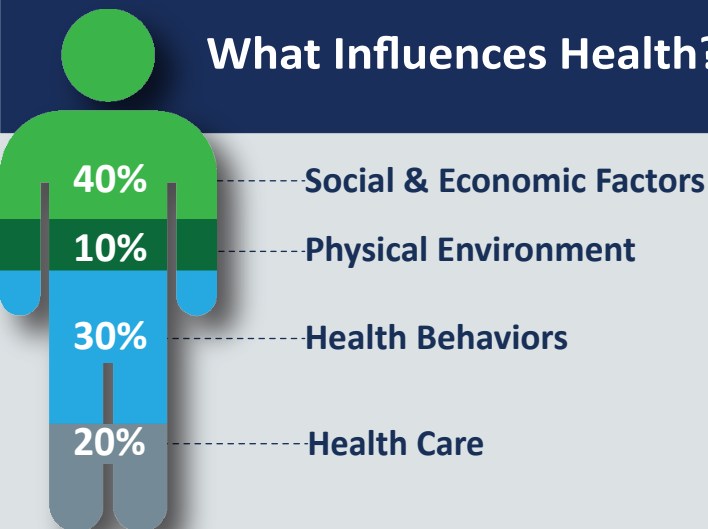


Our Priorities

Public health priority areas included in our current Community Health Improvement Plan (CHIP):

- Access to Care
- Behavioral / Mental Health
- Chronic Disease
- Aging Population
- Early Childhood Care/Education
- Social Determinants of Health

What Influences Health?



80% of what influences health and wellbeing occurs outside of the clinical care setting—in homes, workplaces, schools, and communities.

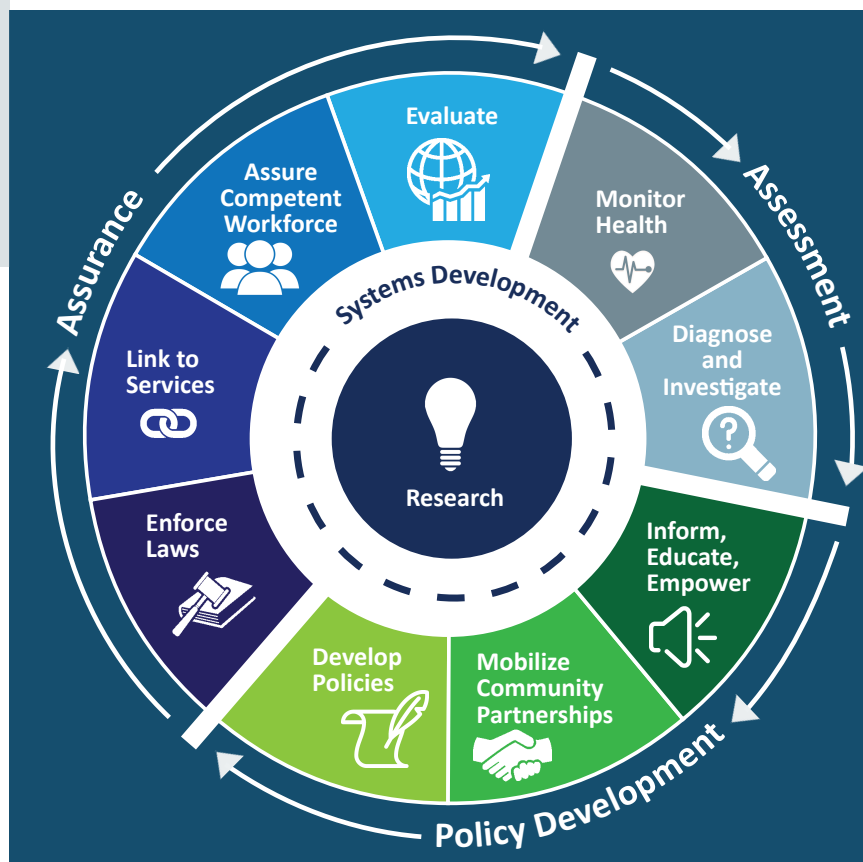
Local health departments (LHDs) are **Chief Health Strategists**—partnering across sectors to promote safety, prevention, and wellness to address that 80%.

Core Functions & 10 Essential Services of Public Health

ASSESSMENT: Collect and analyze information about health problems in Nebraska Communities.

POLICY DEVELOPMENT: Work with partners to apply data, educate the public, and develop programs and policies—all to address and prevent illness, disease, and disability.

ASSURANCE: Promote effective coordination and use of community resources to protect the health and wellbeing of Nebraskans.





PPHD employs 16 full & part-time staff.

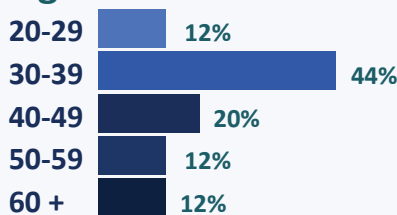
Our Team

PPHD Staff Gender

100% Female

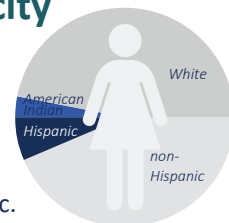


PPHD Staff Age

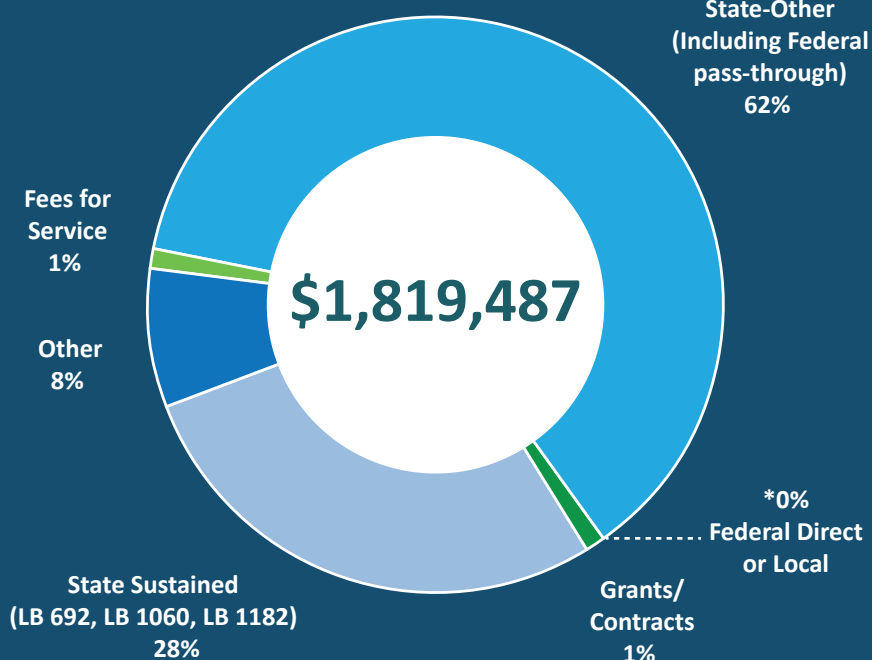


PPHD Staff Race/Ethnicity

94% are White.
6% are American Indian.
13% are Hispanic.
(87% are non-Hispanic.)



Revenue

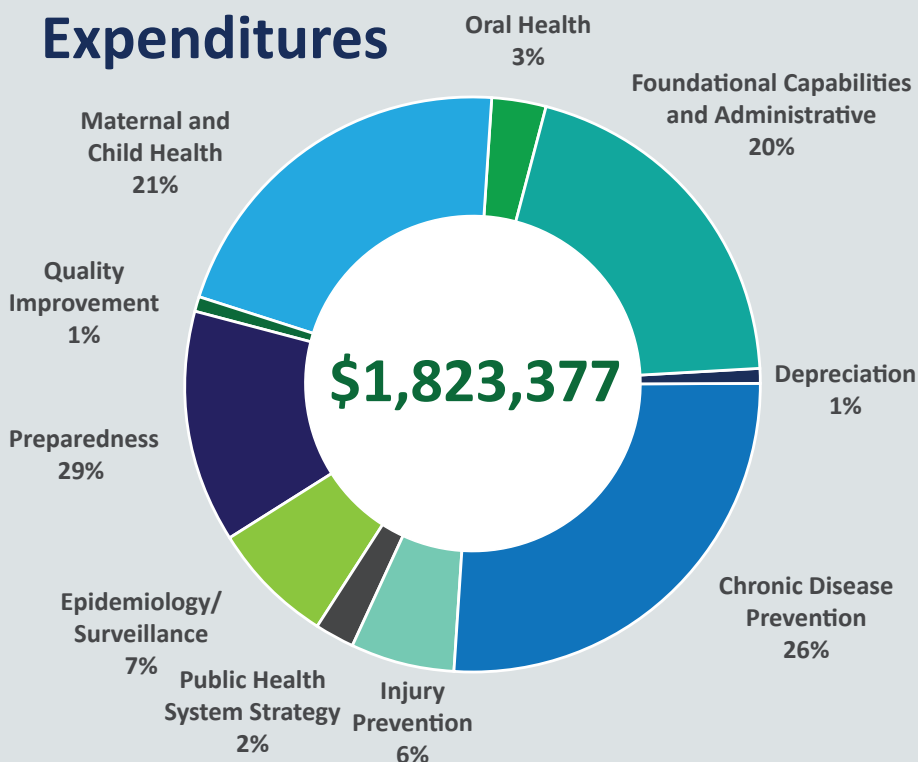


62% of PPHD's FY 2018 revenue included federal dollars passed through from the state.

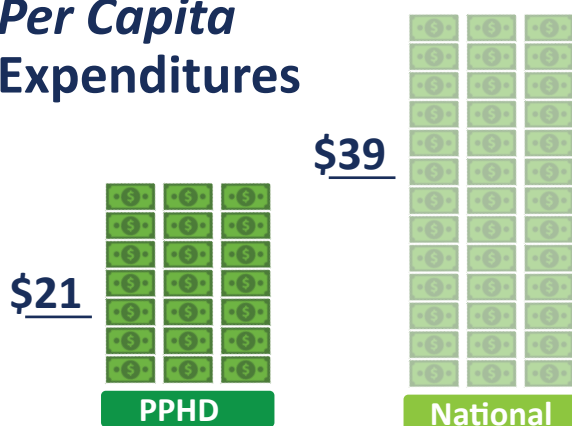
Dollars going to LHDs keep health care systems & communities strong.

28% of PPHD's FY 2018 revenue came from the Nebraska Health Care Cash Fund and General Fund.

Expenditures



Per Capita Expenditures



Every **\$1** invested in prevention saves **\$5.60** in health care costs!

Worth the investment.